

FEATURING
 **VisiLINQ™**

NEW

LANTEK IV-S

**THE FUTURE OF CABLE
CERTIFICATION**

**The most powerful and fastest
certifier we've ever made.**



TREND NETWORKS

Depend On Us

Introducing the new LanTEK IV-S

'S' stands for speed

This is the most powerful and fastest certifier we've ever made.

Testing
100 links
is now 16%
faster

User
interface is
now 42%
faster

NEW

THE FUTURE OF CABLE CERTIFICATION



Twice the CPU processing power.
Now dual-core instead of single-core.

Twice as much RAM.
Provides a faster user experience.

Twice the test memory.
Now stores 5,000 tests vs 2,500 previously.

New 3.0 Software/Operating System.
Offering our fastest user experience yet.



- **7 second test time (Cat 6A)** – one of the fastest test times in the world.
- **Patented VisiLINQ™ increases productivity** – Operate the certifier in the palm of your hand.
- **Future proof investment** – Certify links up to Cat8.1 and Cat8.2.*
- **Certify up to 3000MHz** – Test up to 3000MHz providing room for future ratified ISO/ TIA test standards.*
- **Label printer connectivity saves time** – Create and print complex naming conventions to a label printer.
- **No downtime or unexpected bills** – The Sapphire Care Plan will minimize down time and reduce the cost of ownership.

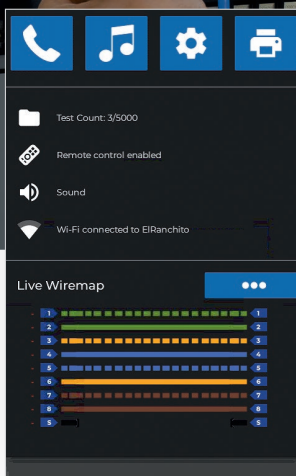
The AnyWARE Cloud Test Management Software is now the fastest in the World



- **Fastest Cloud test management software in the World** - Uploading tests / generating reports is even faster.
- **Easiest project navigation with drag and drop in a Cloud solution** - Navigating between the building/ room/cabinet/rack is easier than ever with collapsible folders.
- **Eliminate costly setup errors** – Pre-configure all project information in the TREND AnyWARE Cloud.
- **Live support** – Connect to the LanTEK IV-S remotely, minimizing troubleshooting time, increasing collaboration and reducing LanTEK IV-S call-backs.

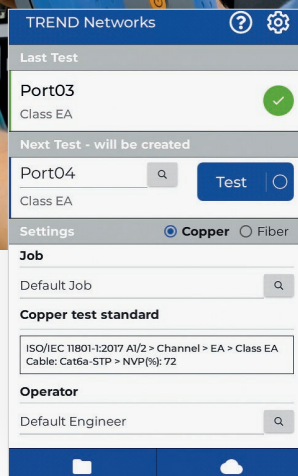
* Applies to the LanTEK IV-S 3000MHz model only.

Key Features



Live Wiremap

Live wiremap displays a real-time wiremap without the need to run a full Autotest.



Easy Setup

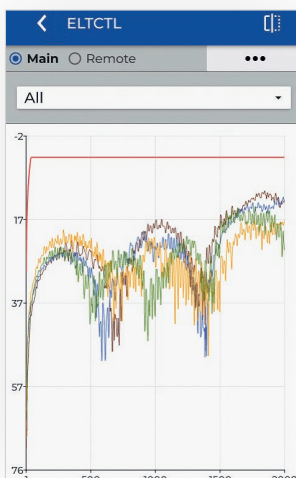
Setup job, configure copper and fiber tests and start testing from one screen.

< Unbalanced P2P Resistance				
Pair	Value Ω	Margin Ω	Limit Ω	
1,2-3,6	0.09	1.29	1.38	i
1,2-4,5	0.10	1.28	1.38	i
1,2-7,8	0.01	1.37	1.38	i
3,6-4,5	0.02	1.36	1.38	i
3,6-7,8	0.07	1.31	1.38	i
4,5-7,8	0.09	1.29	1.38	i

< Unbalanced Pair Resistance				
Pair	Value Ω	Margin Ω	Limit Ω	
1,2	0.02	0.57	0.59	i
3,6	0.11	0.48	0.59	i
4,5	0.02	0.58	0.59	i
7,8	0.07	0.52	0.59	i

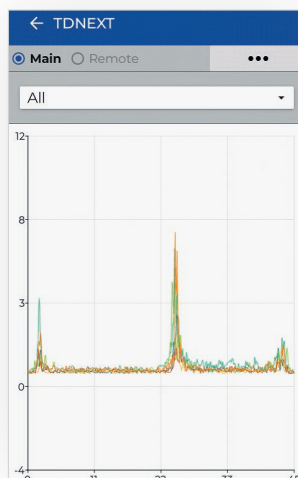
Resistance Unbalance

Resistance Unbalance measured to ensure the cabling supports the latest PoE requirements.



TCL/ELTCTL

TCL/ELTCTL measured to meet balance requirements for optimal performance in noisy environments.



Troubleshooting

Every Autotest runs Time Domain NEXT and Time Domain Return Loss tests which show the distance to the location of crosstalk events, hidden connectors, splices and other cable problems.



VisiLINQ™ enables Field Technicians to initiate testing and view the result all without the need to carry or touch the certifier.

Just press the VisiLINQ test button to start testing.



Work smarter not harder with the unique VisiLINQ™ Permanent Link Adapter



In loud server rooms the visual indication makes for immediate identification of test status instead of relying on the simple beep of other certifiers.



Colour key

- Torch mode
- Connected/Ready to test
- Pass
- Marginal Pass/Fail
- Fail

Patented

Increase speed

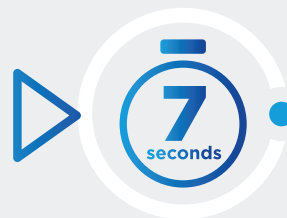
LanTEK IV-S is the fastest Cloud enabled certifier in the world.

Contact us today to see how much time and money you could save using our ROI calculator.



Test and save a Cat 5e/6/6A test with all the required and optional measurements in just 7 seconds.

- Wiremap
- Length
 - Delay / Skew
 - DC Loop Resistance
 - NEXT / PS-NEXT
 - Return Loss
 - ACR-F / PS-ACR-F
 - ACR-N / PS-ACR-N
- TCL / ELTCTL
- Pair-to-Pair DCRU / Pair DCRU
- Time Domain NEXT / Return Loss



Test Management Software



The new TREND AnyWARE Cloud management system allows real time collaboration between Project Managers and Field Technicians. There is no need for Field Technicians to setup the LanTEK IV, Project Managers pre-configure the jobs and tests in the TREND AnyWARE Cloud, eliminating potential mistakes and compressing the time taken to prepare reports for customers and warranties.

Cloud software

- **Operates anywhere with a web browser** – TREND AnyWARE Cloud operates on a PC, Mac and tablet devices (Android and iOS)
- **Free storage** – No need for separate servers or backup systems.
- **Easy to find project files** – Attach all project files including cable layout drawings, videos, and photos into the TREND AnyWARE Cloud. Everything you need in one place.
- **Share reports easier** – Use TREND AnyWARE Cloud to share links to the test reports eliminating the need to manually email large attachments.
- **Reduce training time with WalkMe** – TREND AnyWARE Cloud is embedded with the WalkMe digital adoption platform providing proactive, step-by-step guidance on all key tasks.



Fleet management

- **Easily manage your certifier fleet** – Fleet manager allows you to see who has the certifier, when the software was last updated, calibration due date and when the results were last synced. Allowing you to manage tester downtime and ensuring results are transferred back to the office and not lost or deleted.

The AnyWARE Cloud Test Management Software is now the fastest in the World - Uploading tests / generating reports is even faster

Test Name	Date	Time	Cable standard	Test Limit LTV	Link model	Length (m)	Headroom (dB)
Cabinet 1							
AP.01	28/07/2021	16:25	ANSI/TIA-56...	Cat6	Permanent L...	17.24	10.70
AP.02	28/07/2021	16:25	ANSI/TIA-56...	Cat6	Permanent L...	17.32	10.60
Port01	10/08/2021	13:13	ANSI/TIA-56...	Cat6	Permanent L...	0.00	19.00
Port02	10/08/2021	13:13	ANSI/TIA-56...	Cat6	Permanent L...	0.07	18.90
Port03	10/08/2021	14:09	ANSI/TIA-56...	Cat8	Permanent L...	0.01	0.00
Register.01	28/07/2021	16:26	ANSI/TIA-56...	Cat6	Permanent L...	17.75	10.40
Register.02	28/07/2021	16:44	ANSI/TIA-56...	Cat6	Permanent L...	17.18	10.60
Register.03	28/07/2021	16:44	ANSI/TIA-56...	Cat6	Permanent L...	16.97	10.80
Register.04	28/07/2021	16:44	ANSI/TIA-56...	Cat6	Permanent L...	17.33	10.70
Register.05	10/08/2021	13:12	ANSI/TIA-56...	Cat6	Permanent L...	0.00	21.40

TREND AnyWARE Cloud Jobs screen



TREND AnyWARE Cloud Test Result screen

Easiest project navigation with drag and drop in a Cloud solution. Navigating between the building/room/cabinet/rack is easier than ever with collapsible folders. Unique to the TREND AnyWARE Cloud.

Real time collaboration between Project Managers and Field Technicians

Pre-configuration

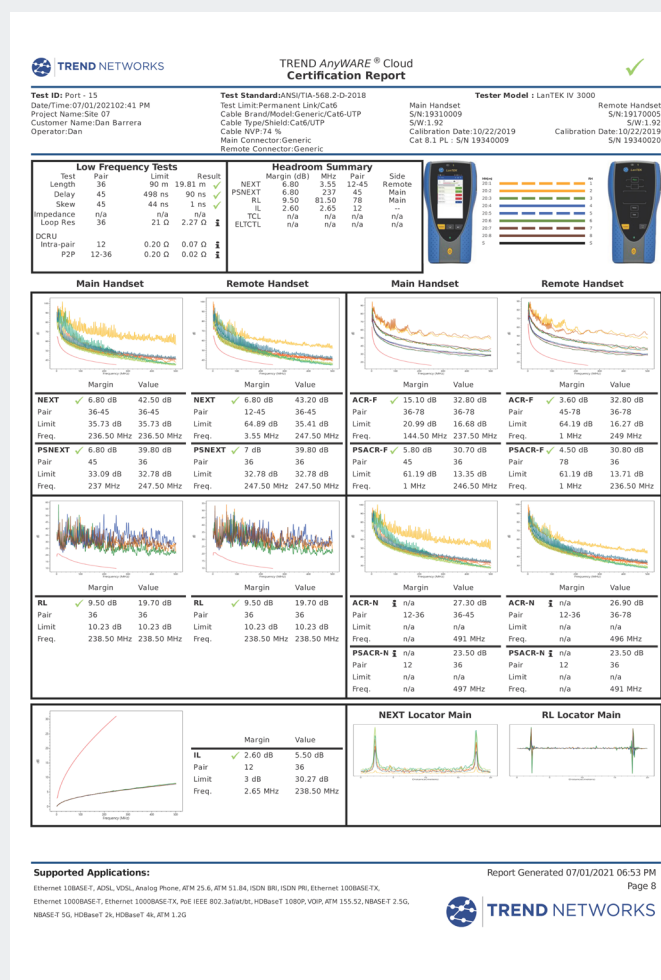
- **Reduce setup errors** – Project Managers pre-configure all project information in the TREND AnyWARE Cloud and Field Technicians simply download the project to the LanTEK IV-S eliminating any mistakes from manual data entry.
- **Create the most complex test IDs** – Easily create simple or sophisticated naming conventions required by the client.

Troubleshooting

- **Advanced filtering** – filter tests on any field to reduce the time spent searching.

Professional reports

- **Customer profiles** – Create a profile for each of the customers with their company logo, address and contact details. This information is automatically pulled through to the reports, saving time.
- **3 Report Formats**
 - **Standard report** – The Standard report combines the Single line and Brief report.
 - **Single line report** – This is a summary report showing multiple tests per page.
 - **Brief report** – This is a comprehensive report with all the measurement results with one page per test.



Professional PDF Report generated by the TREND AnyWARE Cloud

LanTEK IV-S

New COAX and M12 adapters available in 2022

New dual-core CPU inside with twice the memory

Voltage Protection

Provides immediate notification/protection if accidentally connected to PoE

Partner Finder

Provides audible tone and visible indicator when connected to the remote unit

Intuitive User Interface

Simplified user interface for easy setup and operation

Touchscreen

High resolution impact resistant touchscreen for ease of use

Beyond Cat 8 / Class II

LanTEK IV-S 3000 MHz exceeds highest current standards by 50% for future applications

Complete Connectivity

Wi-Fi
USB A
USB C

Live wiremap

Instant wiremap result before the Autotest begins

Label Printer Connectivity

Easily send label IDs to printers for fast and accurate labeling

Integrated Kickstand

Integrated Kickstand Allows for convenient placement on a desk or shelf for easy viewing

Performs all extended measurements

TCL / ELTCTL
Resistance Unbalance
Shield integrity

Rugged Design

Rubberized housing, protected screen and protected measurement port (Patented)



Permanent Link Modules (VisiLINQ™)

To test and certify UTP/STP Cat5e/6/6A/8.1 cabling from the patch panel to the work area outlet. The RJ45 tip on the Permanent Link Modules are field replaceable to reduce the cost of ownership.



Channel Modules

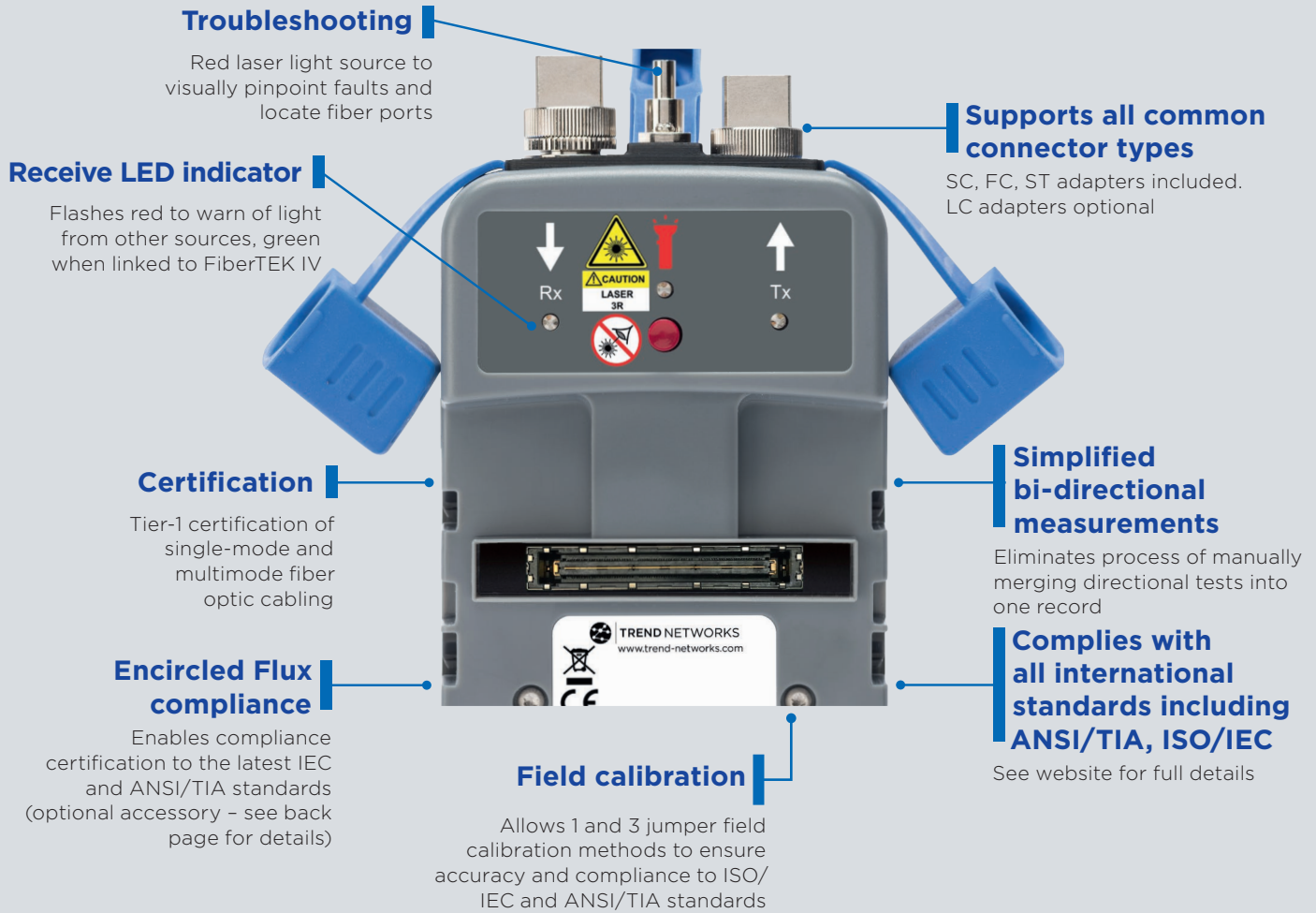
Select from a wide range of Channel Testing Modules for various applications including: Cat6A RJ45, Cat8.1 RJ45, Cat7A/8.2 GG45, TERA, EC7, COAX and M12.



Patch Cord Modules

Cat5e/6/6A testing modules are available for certification of patch cords to TIA and ISO standards. A patch cord module can be combined with a permanent link adapter to perform a Modular Plug Terminated Link (MPTL) test.

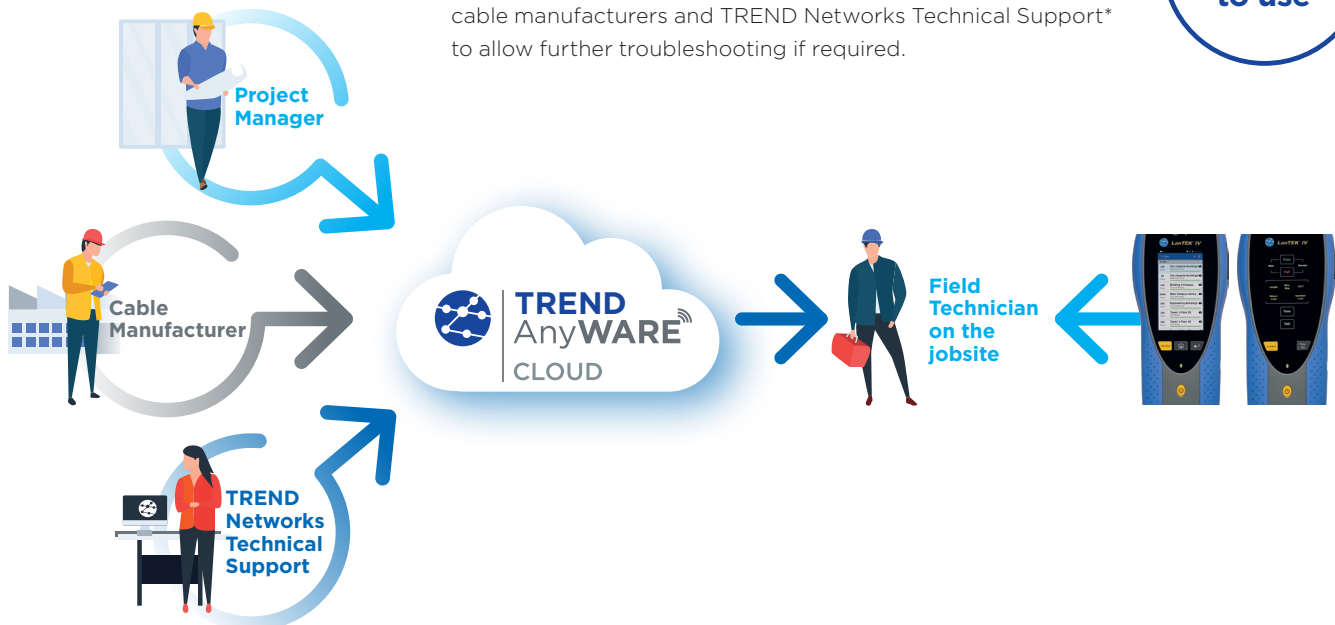
FiberTEK IV



TeamViewer Live Support

Project Managers can connect to a LanTEK IV-S on the jobsite using its built-in TeamViewer server to troubleshoot failed links therefore minimizing troubleshooting time, increasing collaboration and reducing call-backs. Access can be granted to cable manufacturers and TREND Networks Technical Support* to allow further troubleshooting if required.

Now even easier to use





Sapphire

CARE PLAN

Complete protection for your LanTEK IV-S and FiberTEK IV

The Sapphire Care Plan is designed to help minimize down time, reduce the cost of ownership and protect against unforeseen repair bills.

Free Annual Calibration – Maintain Accuracy

Free Repairs – Protect Against Unforeseen Bills

Free Loan Unit During Repairs and Calibration – No Downtime

Free Online Training and Technical Support – Improve Efficiency

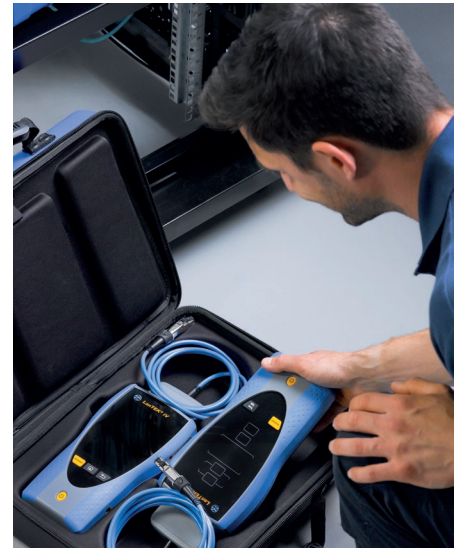
Free Shipping – Reduce Costs

Free Replaceable Wear Parts – Reduce Cost of Ownership

Every year choose from one of the following options.

- 4 x Permanent Link Adapter Tips (Pair)
- 4 x CAT6A Reference Patch Cord (Single)
- 2 x CAT6A Channel Adapter (Single)
- 1 x LanTEK III/IV-S Battery (Single)

For a full list of optional accessories, please visit our website.



Upgrade Options

Existing customers can always Depend On Us



Upgrade your existing LanTEK IV to the most powerful and fastest certifier we've ever made with one of the options below.

Option 1

Software and Hardware

New or existing Sapphire Care Plan customers can upgrade to a LanTEK IV-S free of charge.

Option 2

Software and Hardware

Non-Sapphire Care Plan customers can upgrade to a LanTEK IV-S for a small fee including 12 month calibration.

Option 3

Software only

All existing LanTEK IV customers can upgrade to the new 3.0 software Operating System free of charge.

If you're not a Sapphire customer don't worry you can purchase a 1, 2 or 3 year Sapphire Care Plan and receive the free upgrade.

Book your upgrade today!



Terms and conditions apply. Upgrade includes hardware and software updates at one of our Service Centres. For Sapphire Care Plan customers the free upgrade replaces the choice of free accessory in that year.

LanTEK IV-S

Cable Certifier Bundles

We have created a series of product bundles with our most popular accessories, listed below and applied a generous discount to the bundled offering. Visit our website to see how much you could save on a each bundle.

Part No	Quantity	Description	LT4-500S	LT4-3000S	LT4-500FS	LT4-3000FS	LT4-500FOS	LT4-3000FOS
			Bundle					
			1	2	3	4	5	6
R163008	1	LanTEK IV-S 500MHz (with PL/CH adapters)	•		•		•	
R163009	1	LanTEK IV-S 3000MHz (with PL/CH adapters)		•		•		•
SCP1YRN	1	Sapphire Care Plan - 1 Year (incl. 10% discount)	•	•	•	•	•	•
R164010	1	FiberTEK IV-MM LED & SM Laser Kit			•	•	•	•
R164061	1	FT III/IV-Cable and adapter kit LC MM 50/125µm			•	•	•	•
R164062	1	FT III/IV-Cable and adapter kit LC SM 9/125µm			•	•	•	•
SCP1YF-PAIRS	1	Sapphire Care Plan - Fiber (MM and SM) - 1 Year			•	•	•	•
R240-QIP	1	FiberMASTER Quad OTDR					•	•
R240-ML-SCSC	2	Launch Cable, OM3, 150m, SC-SC					•	•
R240-ML-SCLC	2	Launch Cable, OM3, 150m, SC-LC					•	•
R240-SL-SCLC	2	Launch Cable, SM G.657 A1, 150m, SC-LC					•	•
R240-SL-SCSC	2	Launch Cable, SM G.657 A1, 150, SC-SC					•	•
R240-VIP	1	FiberMASTER Video Inspection Probe					•	•
SCP1YFM-Q	1	Sapphire Care Plan - FiberMASTER Quad - 1 Year					•	•

Bundle 1	Bundle 2	Bundle 3	Bundle 4	Bundle 5	Bundle 6
LT4-500S	LT4-3000S	LT4-500FS	LT4-3000FS	LT4-500FOS	LT4-3000FOS
					

LanTEK IV-S

Cable Certifier



Ordering information

Part No	Kit Contents
R163008	LanTEK IV-S 500MHz Cable Certifier. TIA Category 6A/ ISO Class EA. LanTEK IV Display/Remote handsets, Li-ion Battery (2), Univ. Power Adapter (2), Hang Strap (2), Quick Ref. Guide, Carry Case, CAT6A RJ45 VisiLINQ Permanent Link Adapters (2), CAT6A/6/5e RJ45 Channel Adapter (2)
R163009	LanTEK IV-S 3000MHz Cable Certifier. TIA Category 8/ ISO Class I/II. LanTEK IV Display/Remote handsets, Li-ion Battery (2), Univ. Power Adapter (2), Hang Strap (2), Quick Ref. Guide, Carry Case, CAT8 RJ45 VisiLINQ Permanent Link Adapters (2), Cat8.1/6A/6/5e RJ45 Channel Adapter (2)
TRADE163008	Trade-In of any Cat5e (or higher) cable certifier to a LanTEK IV-S 500MHz
TRADE163009	Trade-In of any Cat5e (or higher) cable certifier to a LanTEK IV-S 3000MHz

Ordering information

Part No	Kit Contents
R164008	FiberTEK IV-MM LED Kit. Two multimode FiberTEK IV modules, lockable semi-rigid carrying case, SC, FC, ST adapters for modules (2 ea.), SC-SC patch cords, 6x 50µm MMF) compliant to ISO/IEC 14763-3 standard, quick reference guide. Compatible with LanTEK IV.
R164009	FiberTEK IV-SM Laser Kit. Two single-mode FiberTEK IV modules, lockable semi-rigid carrying case, SC, FC, ST adapters for modules (2 ea.), SC-SC patch cords, 6x 9µm MMF) compliant to ISO/IEC 14763-3 standard, quick reference guide. Compatible with LanTEK IV.
R164010	FiberTEK IV-MM LED & SM Laser Kit. Two multimode FiberTEK IV modules, two single-mode FiberTEK IV modules, lockable semi-rigid carrying case, SC, FC, ST adapters for modules (2 ea.), SC-SC patch cords, 6 x 9µm, 6 x 50µm compliant to ISO/IEC 14763-3 standard, quick reference guide. Compatible with LanTEK IV.

LanTEK IV-S Optional Adapters and Accessories

Part No	Descriptions
R163052	LT IV-Cat6A/6/5e RJ45 Channel Adapter (Single)
R163053	LT IV-Cat8.1/6A/6/5e RJ45 Channel Adapter (Single)
R163054	LT IV-Cat8.2 TERA Universal Adapter (Single)
R163056	LT IV-Cat8.2 GG45 Universal Adapter (Single)
R163055	LT IV-Cat8.2 EC7 Universal Adapter (Single)
R163057	LT IV-Cat5e / Class D Patch Cord / MPTL Test Adapter (Single)
R163058	LT IV-Cat6 / Class E Patch Cord / MPTL Test Adapter (Single)
R163059	LT IV-Cat6A / Class Ea Patch Cord / MPTL Test Adapter (Single)
R161050	LT III/IV-CAT6A/8.1 PLA Replacement Tips (Pair)
R180001	TREND Amplifier Probe

Sapphire Care Plans for LanTEK III/IV/IV-S

Part No	Descriptions
SCP1YRN	Sapphire Care Plan - Copper - 1 Year (incl. 10% discount) *
SCP2YRN	Sapphire Care Plan - Copper - 2 Years (incl. 10% discount) *
SCP3YRN	Sapphire Care Plan - Copper - 3 Years (incl. 10% discount) *
SCP1YR	Sapphire Care Plan - Copper - 1 Year
SCP2YR	Sapphire Care Plan - Copper - 2 Years
SCP3YR	Sapphire Care Plan - Copper - 3 Years
Included: Free repairs, free annual calibration, free loan tester during repairs and calibration, free shipping, free firmware updates, free technical support, free replaceable wear parts. Terms and conditions apply.	

* When purchased within 60 days of purchasing a new LanTEK III/IV/IV-S.
For details, please visit: www.trend-networks.com under LanTEK III/IV accessories.

FiberTEK IV Optional Accessories

Part No	Descriptions
R164050	FT III/IV-Encircled Flux 50/125um Cable SC - SC
R164051	FT III/IV-Encircled Flux 50/125um Cable SC - LC
R164064	FTIII/IV - LC Receiver Adapter (Single)

LanTEK III 500MHz cable certifier is also available to purchase.
See website for details.

Sapphire Care Plans for FiberTEK III/IV

Part No	Descriptions
SCP1YF	Sapphire Care Plan - Fiber (Per Pair) - 1 Year
SCP2YF	Sapphire Care Plan - Fiber (Per Pair) - 2 Years
SCP3YF	Sapphire Care Plan - Fiber (Per Pair) - 3 Years
SCP1YF-2PAIRS	Sapphire Care Plan - Fiber (MM and SM) - 1 Year
SCP2YF-2PAIRS	Sapphire Care Plan - Fiber (MM and SM) - 2 Year
SCP3YF-2PAIRS	Sapphire Care Plan - Fiber (MM and SM) - 3 Year
Included: Free repairs, free annual calibration, free loan tester during repairs and calibration, free shipping, free firmware updates, free technical support, free replaceable wear parts. Terms and conditions apply.	



TREND NETWORKS North America
300 Roundhill Drive, Suite 1,
Rockaway, NJ 07866, USA
Tel. 973-957-7700
contactus@trend-networks.com
www.trend-networks.com



Specification subject to change without notice. E&OE
© TREND NETWORKS 2022
Publication no.: 163847. Rev 2.

TREND NETWORKS, LanTEK, FiberTEK, VisiLINQ and the TREND AnyWARE logos are trademarks or registered trademarks of TREND NETWORKS.