



More than just a wiremapper



VDV II

Voice, Data and Video Cable Verifier

VDV II

Voice, Data and Video Cable Verifier

More than just a wiremapper

The VDV II Series are easy to use cable testers that check the integrity of copper cables commonly found in domestic, commercial or industrial voice, data or video installations, including telephone wiring, data network and video/security cabling.

Employing state-of-the-art technology, VDV II offers functionality not previously available in a wiremapper. The advanced wiremap engine accurately displays complex wiring faults instantaneously whilst TDR (Time Domain Reflectometry) aids troubleshooting and improves on-site productivity.



VDV II

Performs standard tests for copper cabling, including:

- Coax, 6Pin (RJ11/12), 8Pin (RJ45) Connectors for Copper Cable Testing
- Wiremap for Miswires, Split Pairs, Shorts and Opens
- Analog Tone Generator
- Voltage Protection
- Shielded Cable Testing
- Single Screen Results



VDV II Plus

All the features of the VDV II including:

- Larger 2.9" Display
- Backlight
- Hub Blink
- Cable Length
- Distance to Open
- Carry Case & Cables



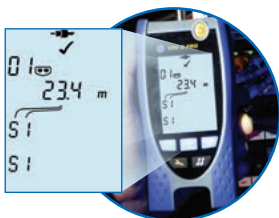
VDV II Pro

All the features of the VDV II Plus and...

- Distance to Open / Short (TDR)
- PoE Detection with Voltage Information
- Media Service Detection
- Ethernet Detection with Network Rate and Duplex Information



Wiremap with length



Coax testing



Service detection

Accuracy

The flagship VDV II Pro utilizes TDR to accurately measure cable length and provide distance to fault information. TDR's work by injecting a signal into the cable and measuring the time for any signal to be reflected back after encountering changes in impedance caused by cable damage, open and short circuits. The recorded time is then translated into an accurate distance measurement. TDR helps to pinpoint where cabling faults occur. This speeds up fault finding as well as minimizing disruption and potential damage to fixtures and fixings.

Speed

With comprehensive details on faults such as opens, shorts, crossovers and split pairs, VDV II identifies wiring errors instantly. The integrated RJ11/RJ12 (voice), RJ45 (data) and F-Type (video) connectors allow faster testing of most types of low-voltage cables by eliminating the need for separate testers or adapters.

Intelligence

Connection issues are not always associated with cable faults, so VDV II Pro has the capability to help identify service related issues. By detecting the presence of voltage and checking polarity, VDV II Pro quickly determines which media service is running over the cable, such as ISDN, PBX and PoE (Power over Ethernet) resulting in faster fault diagnosis. Troubleshooting active Ethernet networks is also made easier with in-built network detection that displays network rate and duplex information. Furthermore, to prevent potentially costly damage to the tester all VDV II's are smart enough to know when they have been plugged into an outlet where voltage is present.

Multimedia Support

RJ45, RJ11/RJ12 and coax ports for verification of low voltage copper cables

TDR Length Testing and Troubleshooting

Pinpoints cable faults eliminating unnecessary guess work

Tone Generator

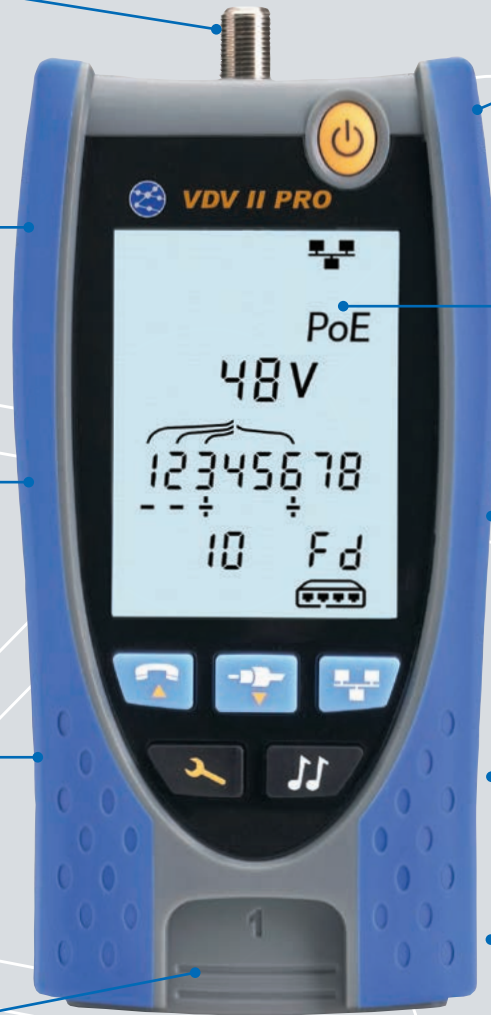
Ability to identify and trace cables with a compatible inductive tone probe (optional)

PoE Detection

PoE service detection with voltage information

Storage and Protection of Remote Unit

Reduces the chance of losing or damaging the remote unit. Additional numbered remotes available



Cat 5, Cat 5e, Cat 6, Cat 6_A, Cat 7, UTP and STP Testing

Support for all common LAN cables (TIA 568A/B wiring schemes)

Large Backlit Screen

Instantaneous, easy to read test results

Media Service Detection

Identifies analog (PBX) and digital (ISDN) telephone services

Ethernet Detection

Displays network rate and duplex information

Voltage Protection

Cable testing disabled if >2V detected

Applications



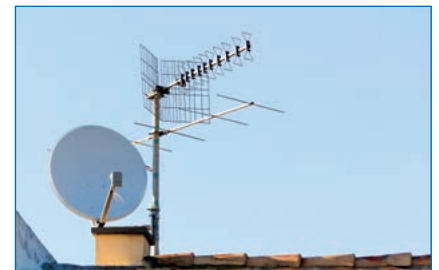
VOICE

Support for 1, 2 or 3-pair RJ11/12 telephone cable testing



DATA

Testing of shielded and unshielded Cat 5/5e/6/6_A/7 LAN cable



VIDEO

Tests coax cable through F-connector interface

VDV II





Voice, Data and Video Cable Verifier More than just a wiremapper



Ordering Information

VDV II Range	
Part No.	Kit Contents
R158000	VDV II – Voice, Data and Video Cable Verifier. Includes 1 x tester, 1 x dual port remote unit, 1 x coax remote unit, 1 x alkaline battery, 1 x multi-language user guide.
R158002	VDV II Plus – Voice, Data and Video Cable Verifier. Includes 1 x tester, 1 x dual port remote unit, 1 x coax remote unit, 1 x alkaline battery, 1 x multi-language user guide, 2 x RJ45 to alligator clip cable 390mm, 2 x screened RJ45 to RJ45 cable 150mm, 2 x RJ11/12 to RJ11/12 cable 100mm, 1 x F-type plug to F-type plug cable 230mm, 1 x F-81 barrel splice, 1 x BNC female to F-type male adaptor, 1 x BNC female to F-type female adaptor, 1 x RCA female to F-type male adaptor, 1 x RCA female to F-type female adaptor, 1 x wallet wiring card, 1 x carry case.
R158003	VDV II Pro – Voice, Data and Video Cable Verifier. Includes 1 x tester, 1 x dual port remote unit, 1 x coax remote unit, 1 x alkaline battery, 1 x multi-language user guide, 2 x RJ45 to alligator clip cable 390mm, 2 x screened RJ45 to RJ45 cable 150mm, 2 x RJ12 to RJ12 cable 100mm, 1 x F-type plug to F-type plug cable 230mm, 1 x F-81 barrel splice, 1 x BNC female to F-type male adaptor, 1 x BNC female to F-type female adaptor, 1 x RCA female to F-type male adaptor, 1 x RCA female to F-type female adaptor, 1 x wallet wiring card, 1 x carry case.

Optional Accessories

Part No.	Kit Contents
158050	 Kit of 12 x RJ45 remote units* (#1 - #12)
158051	 Kit of 24 x RJ45 identifiers** (#1 - #24)
158053	 Kit of 12 x coax remote units* (#1 - #12)
R180001	 Amplifier Probe

* Separate numbered remotes allow multiple cables to be tested more quickly

** Multiple identifiers simplify cable labelling at the patch panel

Basic Specifications

Dimensions (mm)	Weight	Length Range	Battery Type
160 x 76 x 36	0.26 kg	0.3 - 450m / 1-1476 ft (Plus and Pro only)	9V alkaline. Typically 20 hours minimum continuous use (backlight off)

For detailed specifications, please visit our website.



TREND NETWORKS

TREND NETWORKS North America
300 Roundhill Drive, Suite 1,
Rockaway, NJ 07866, USA

Tel. 973-957-7700

contactus@trend-networks.com

www.trend-networks.com

Specification subject to change without notice. E&OE
Printed in UK.
© TREND NETWORKS 2021
Publications no.: 158805, Rev. 2