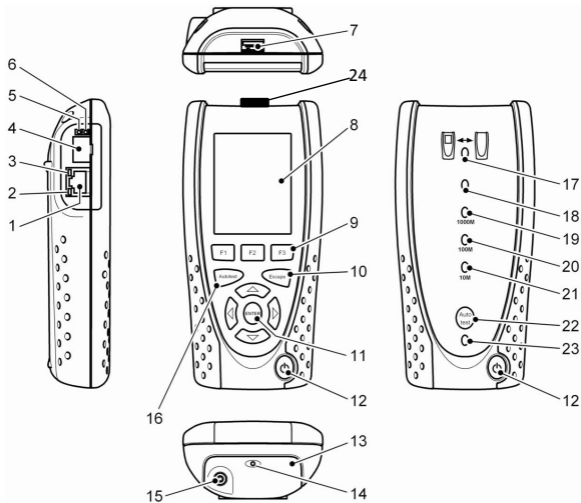




TREND NETWORKS

SignalTEK NT





1	RJ 45 端口	13	电源模块
2	RJ 45 活动 LED	14	*充电器 LED
3	RJ45 链路 LED	15	DC 输入接口
4	光链路端口 (SFP)	16	Autotest (自动测试) 按钮
5	光链路活动 LED	17	链路 LED
6	光链路链接 LED	18	状态 LED
7	USB 端口	19	1000 Mb/s 线速 LED
8	LCD 彩色触摸显示屏	20	100 Mb/s 线速 LED
9	功能键 F1 到 F3	21	10 Mb/s 线速 LED
10	Escape (退出) 键	22	远端 Autotest (自动测试) 按钮
11	光标和 ENTER (输入) 键	23	电源 LED
12	开关按钮	24	Wi-Fi 无线网络适配器

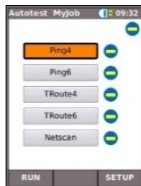
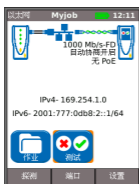
*充电器 LED	状态
绿色	电源模块正在充电
关 (已连接充电器)	电源模块已充电
绿灯闪烁	电源模块不在充电

4 种操作方法

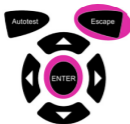
A



B



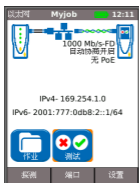
C



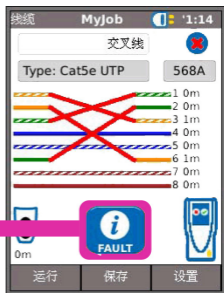
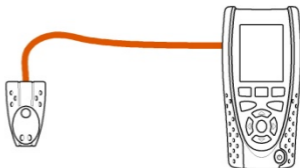
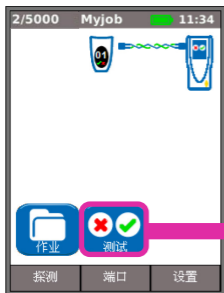
Escape (退出) — 返回上一屏幕

ENTER (输入) — 接受选择

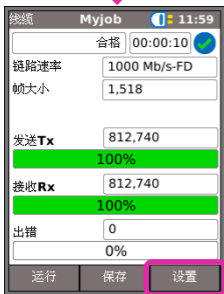
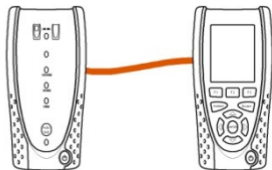
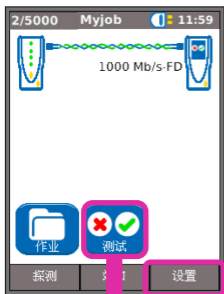
D



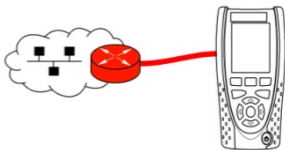
接线图测试



线缆测试



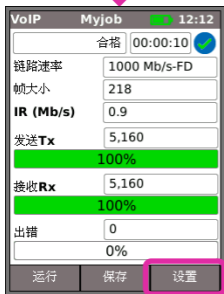
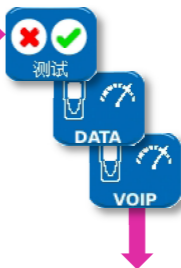
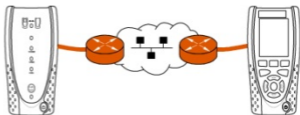
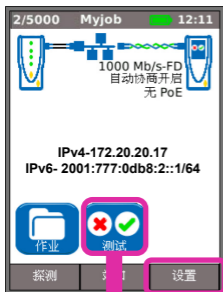
IP 测试



运行



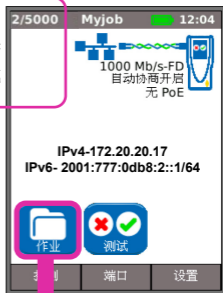
性能测试



保存和查看测试结果



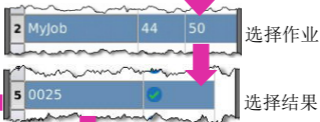
已保存 2 项测试。
存储容量 = 5000 项测试



将结果保存到
SignalTEK NT



查看



或保存
到 USB

至USB



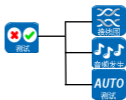
或使用智能手机通过
TREND AnyWARE™
APP 应用程序
(Android™ / Apple)
下载报告



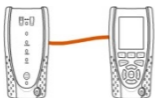
Apple 是苹果公司在美国和其他国家的注册商标。
Android 是谷歌公司注册商标。

测试菜单结构图

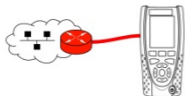
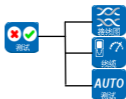
线缆模式



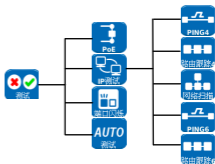
以太网模式



1



2



3

